



MemoryFrame™



Transfer & Display Photos Directly From Your Digital Camera Displays 55+ Photos in a Continuous Slideshow

- **Bright 5.6" TFT LCD Screen**
- **Simple DirectConnect™ Plug & Play with USB**
- **Quick Transfer Into Onboard Memory**
- **Fits Virtually Any 5" x 7" Picture Frame to Match Your Décor**
- **No subscriptions, no costly memory cards, no PC required, just transfer & view!**



Finally there is a new way to display photos instantly without expensive PCs, subscriptions, memory cards, paper or ink.

Just DirectConnect™ and view! The MemoryFrame™ from Pacific Digital lets you quickly transfer photos directly from your digital camera (or PC) and play them back in a slideshow in your home or office.

With its high-quality active matrix TFT LCD display providing vibrant high-resolution images, the Pacific Digital MemoryFrame™ gives digital photographers an easy solution to showcase their photos, without the need for a PC or printer.

The only product of its kind to be compatible with both USB cameras as well as USB readers for standard MemoryStick™, CompactFlash™ and SmartMedia™ memory cards, the Pacific Digital MemoryFrame™ operates with the vast majority of USB Mass Storage compliant digital cameras in use today.

The USB interface provides speed and portability allowing users to download immediately from their own or friend's cameras with just a simple and fast high-speed USB transfer. It is ideal for both home and office users to proudly display family photos on the desk, shelf, or wall.

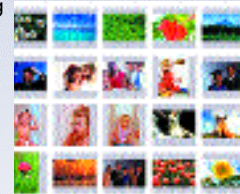
The stylish design of the Pacific Digital MemoryFrame™ and its unique ability to use virtually any off-the-shelf wood 5x7 picture frame allows you to choose a frame that matches your décor, whether it be cherry wood, oak, pine, teak, walnut, etc. This unique feature allows the Pacific Digital MemoryFrame™ to make a handsome display in any home or office, suiting any motif. Includes one 5" x 7" picture frame (type may vary).



Digital PixMaster™ Software

For those who do use a PC, you can also create, name, save, hundreds of different slideshows for easy USB transfer to/from the MemoryFrame™.

Easily create professional looking photo slideshows. Choose the pictures, choose the effects & transitions and let Digital PixMaster™ do the rest. Pacific Digital developed the Digital PixMaster™ software specifically for the home digital photo enthusiast. PixMaster™ is an



innovative solution that is incredibly easy to use, while offering key features, such as the ability to rotate photos, specify effects, and create/name/save unique slideshows from your vacations, sporting events, family functions, etc.

The bundled software easily allows you to create custom slideshows that integrate photos from both your camera as well as images received by email or stored in the "MyPictures" directory of your Windows® PC (or other directories). These slideshows can be quickly downloaded via USB to your MemoryFrame™ for instant viewing enjoyment.



Specifications are subject to change without notice. All trademarks and logos are the property of their respective owners. © Copyright Pacific Digital Corporation, 2002

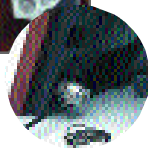
Pacific Digital Corp. 2052 Alton Pkwy. Irvine, CA 92606 Tel: 949-252-1111 Fax: 949-252-9397

PacificDigital.com

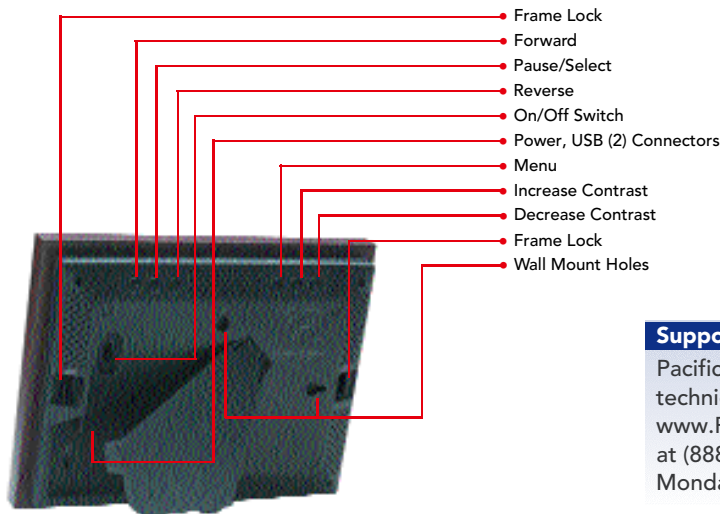
Pacific Digital


MemoryFrame™


The device features a two-position stand for either vertical or horizontal display, and with its easy-to-use on-screen menu system and multi-function control buttons, users can view digital camera or memory card contents at a glance with easy to view thumbnails, edit slide shows, select the time between image changes, add fun transition and display effects, delete images from slideshows, and much more. Manual image forward, pause, and reverse buttons and adjustable contrast are also provided. Kensington-lock-ready capability can keep it secure in busy business office environments.


Specifications

Screen Type:	Bright 5.6" TFT Active Matrix LCD
Camera Interface:	USB 1.1 Host interface
PC Interface:	USB 1.1 Target interface
Memory Sizes:	16 MB RAM & 8MB Flash memory
# of photos stored:	50+ photos
Photo File Format:	JPEG on Camera, JPEG or TIF on PC
Resolution:	320 x 240 actual resolution. Larger pictures are automatically scaled to fit the screen
AC Adapter:	120 VAC, 60 Hz, 17w (International versions available)
Dimensions:	8.31 x 6.33 x 1.71 in (211 x 161 x 43 mm) (w/h/d)
Weight/Mass:	28 oz. (800g)
Environment:	32 - 85 °F, 0-30 °C, 40-64% RH (non-condensing)

Pacific Digital

Optional PC Connection Requirements

- Windows®98 SE/ME, Windows®XP, or Windows®2000
- Pentium II 200MHz with 64MB RAM or higher minimum. Pentium III 300MHz or higher for optimum performance
- PC or compatible system with USB 1.1 or 2.0 port. The unit operates at USB 1.1 speeds when communicating with a PC
- Recommended: 10MB of disk space for software installation, 50MB for storage of slideshows. Slideshows can be stored on HDD, CD-RW, or DVD

Camera Connection Requirements

JPEG photos from Digital Cameras with USB 1.1 or 2.0 port supporting the USB Mass-Storage Class transfer protocol. Compatible with USB camera models from all major brands supporting the above specifications. The unit operates at USB 1.1 speeds when communicating with a camera.

Support:

Pacific Digital Corp. offers one year of free technical support via the web at www.PacificDigital.com or toll-free by phone at (888) 999-0732 Monday through Friday 8:00 to 6:00 PST.

Model: MF-570
PDC Part# U-30140

Contents

- MemoryFrame™ system unit
- Software Utility CD-ROM
- USB Cable
- AC Power Adapter with cable
- 5" x 7" Picture Frame
- User Manual
- Warranty Card